



# User's Manual FP-2000W

Panel Protector for EIZO 51 cm (20.1 inch) class LCD Monitors

## NOTE

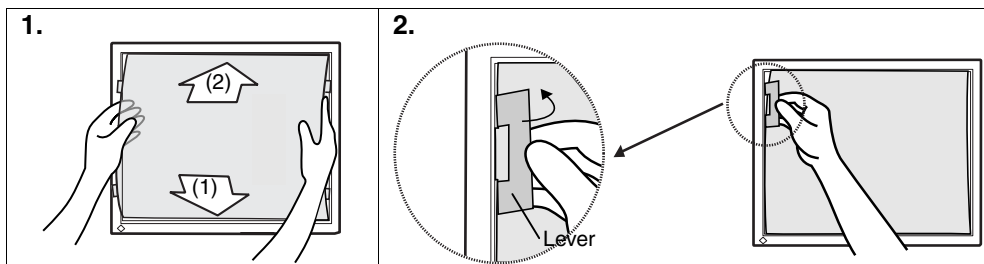
- Please be careful not to scratch the LCD panel or the cabinet with the panel protector during installation.

Also please do not remove the panel protector often. It may scratch or result in damage to the LCD panel.

- The panel protector has a non-glare treatment side and a glossy side. Use preferable side.
- When using LCD monitor with optional panel protector, it is preferable to avoid using downwards. In this condition, the panel protector might become bend or slip out from the monitor.

## Installation

**Before installation, please remove dust and stains from the LCD panel.**



1. Set the panel protector into the grooves of the panel frame; the lower first (1), then the upper (2).
2. With the enclosed tool (Lever) set the tabs of the panel protector into the side grooves (4 tabs).  
Put the lever on the tabs of the panel protector and move it toward the LCD panel to install. Position the protector into the LCD panel tightly without leaving an opening.

## Removing

Put the lever on the tabs of panel protector and move it toward the cabinet to remove.

## Cleaning

### NOTE

- Please be sure to keep the panel protector immobilized while cleaning it. Otherwise it may scratch the surface of the LCD panel. To hold the panel protector by hand, use a soft cloth to avoid dust or finger prints.
- Never use thinner, benzene, alcohol (ethanol, methanol, or isopropyl alcohol), abrasive cleaners, or other strong solvents, as these may cause damage to the cabinet or panel.
- It is recommended to use EIZO cleaning kit "ScreenCleaner" (option) to clean the panel.

The panel surface can be cleaned with a soft cloth such as cotton or lens paper.

If necessary stubborn stains can be removed by moistening part of the cloth with water to enhance its cleaning power.

## Specification

Surface treatment	Non-glare side: non glare hard coating / Glossy side: hard coating
Coating strength	2H
Light transmission	More than 90 %
Dimension/ Weight	437.2 mm (W) × 274.9 mm (H) × 1.0 mm (D) / approx. 150 g
Accessories	Lever (for Panel Protector), User's Manual