

User's Manual

ScreenManager® Pro for LCD (DDC/CI)

Important

Please read this User's Manual carefully to familiarize yourself with safe and effective usage procedures.

The latest software and User's Manual are available for download from our site:
<http://www.eizo.com>

About ScreenManager Pro for LCD (DDC/CI).....	3
1. Setting Up	4
1-1. System Requirements	4
1-2. Installing the ScreenManager Pro for LCD (DDC/CI)....	5
1-3. Setting Icon in the Notification Area	6
1-4. Uninstalling the ScreenManager Pro for LCD (DDC/CI)....	6
2. How to Start up/Exit out of the Setting Window	7
3. Auto FineContrast.....	9
4. Color Adjustment	11
5. Multi-Monitor Match	13
6. Sound.....	16
7. EyeCare	17
8. EyeCare Filter.....	18
9. Troubleshooting.....	20



No part of this manual may be reproduced, stored in a retrieval system, or transmitted, in any form or by any means, electronic, mechanical, or otherwise, without the prior written permission of EIZO Corporation. EIZO Corporation is under no obligation to hold any submitted material or information confidential unless prior arrangements are made pursuant to EIZO Corporation's receipt of said information. Although every effort has been made to ensure that this manual provides up-to-date information, please note that EIZO monitor specifications are subject to change without notice.

Windows is a registered trademark of Microsoft Corporation in the United States and other countries. EIZO, EIZO logo, FlexScan, FORIS, and ScreenManager are registered trademarks of EIZO Corporation in Japan and other countries. All other trademarks are the properties of their respective owners.

About ScreenManager Pro for LCD (DDC/CI)

ScreenManager Pro for LCD (DDC/CI) is the software for adjusting the monitor from the computer using the mouse or keyboard through the signal cable.

Features

- **Auto FineContrast**

By registering a FineContrast mode to each application, the monitor automatically switches its FineContrast mode for each application.

(For some models, the FineContrast mode is referred to as the Color mode.)

- **Color Adjustment (Adjustment Data Registration Function)**

The ScreenManager Pro for LCD (DDC/CI) software provides the monitor's color adjustment function.

Adjusted data can be stored/loaded as registry data of the system.

User color data is also available as a mode for Auto FineContrast function.

- **Multi-Monitor Match**

This function allows the results of color adjustment (color temperature, gamma, and brightness) configured for one monitor to be applied to other monitors. This saves the trouble of adjusting every monitor individually and can easily eliminate any difference in appearance between monitors.

- **Sound Control**

Volume can be controlled if the monitor employs the built-in speaker.

- **EyeCare**

You can care the health of your eyes.

- EyeCare Reminder

Any pop up messages can be shown periodically.

- **EyeCare Filter**

Texture of the paper is reproduced by displaying a translucent image in the foreground of the desktop. The screen looks more like paper by using this function with the Paper mode that is supplied with some models.

- **Multi-monitor Setting Support**

Using the monitor with Multi-monitor setting, the software sets up or adjusts each monitor individually.

1. Setting Up

1-1. System Requirements

The ScreenManager Pro for LCD (DDC/CI) software operates under the system shown below.

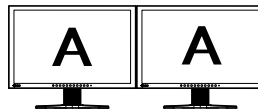
OS	Microsoft Windows 8.1 (32 bit and 64 bit) Microsoft Windows 8 (32 bit and 64 bit) Microsoft Windows 7 Service Pack 1 (32 bit and 64 bit)
Monitor	EIZO FlexScan / FORIS series compliant with DDC/CI extended commands

Note

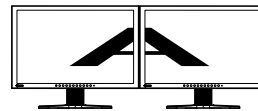
- ScreenManager Pro for LCD (DDC/CI) cannot be used with monitors connected via the DisplayPort connector.
- ScreenManager Pro for LCD (DDC/CI) cannot be used with certain monitors connected via the HDMI connector. For details, refer to the User's Manual of the monitor.
- When multiple monitors are connected, each monitor should display an independent screen. Displaying the same screen on each monitor or across multiple monitors prevents adjustment using the ScreenManager Pro for LCD (DDC/CI) software. For details of how to change the settings, see the User's Manual of the graphics board.



Independent screen on each monitor (OK)



Same screen on each monitor (NG)



A screen over the multiple monitors (NG)

- The following software cannot be used with ScreenManager Pro for LCD (DDC/CI) at the same time. If any of the following software is installed, they will be uninstalled when ScreenManager Pro for LCD (DDC/CI) is installed.
 - ScreenManager Pro
 - ScreenManager Pro for Gaming
 - ScreenManager Pro for LCD
 - ScreenManager Pro for Medical
 - G-Ignition
 - EIZO EcoView NET Client
 - EIZO EasyPIX

1-2. Installing the ScreenManager Pro for LCD (DDC/CI)

1 Connect the monitor to the PC with a signal cable that matches the connectors

After connecting the cable connectors, tighten the screws of the connectors to secure the coupling.

Tips

- Multiple monitors can be connected. For details, refer to the User's Manual of the monitor.

To install the software from the CD-ROM

1 Insert the "EIZO LCD Utility Disk" CD-ROM to the CD-ROM drive

Menu opens automatically. Click "Software" tab.

Click "ScreenManager Pro for LCD (DDC/CI)" on the menu.

Tips

- When the menu does not appear automatically, double click "Launcher.exe".

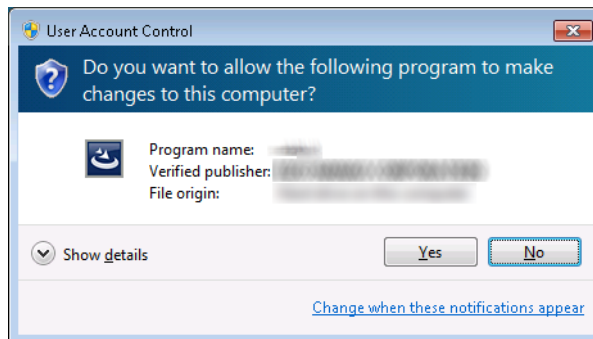
2 Install the software

Click "Install" on the menu, then the ScreenManager pro for LCD (DDC/CI) installer starts up.

Tips

- The "User Account Control" dialog may appear. *1

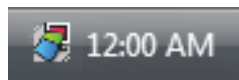
Click "Yes" to open the menu.



*1: The "User Account Control" dialog does not appear depending on the setting.

Follow the instruction of the menu to install the software.

When the installation completes, the ScreenManager Pro for LCD (DDC/CI) setting icon appears in the notification area.



To download and install the software from our website

1 After unzip the downloaded file, double click “Launcher.exe”

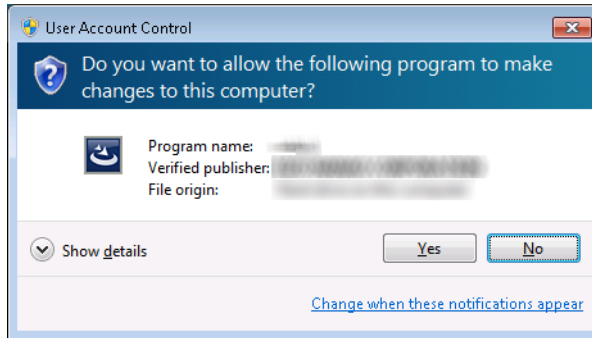
Menu opens automatically. Click “ScreenManager Pro for LCD (DDC/CI)” on the menu.

2 Install the software

Click “Install” on the menu, then the ScreenManager pro for LCD (DDC/CI) installer starts up.

Tips

- The “User Account Control” dialog may appear. *1
Click “Yes” to open the menu.





*1: The “User Account Control” dialog does not appear depending on the setting.

Follow the instruction of the menu to install the software.

When the installation completes, the ScreenManager Pro for LCD (DDC/CI) setting icon appears in the notification area.



1-3. Setting Icon in the Notification Area

 Color	The software has detected the connected monitor. ScreenManager Pro for LCD (DDC/CI) is active.
 Monochrome	ScreenManager Pro for LCD (DDC/CI) is not active. For the details, refer to “9. Troubleshooting” (page 20) .

1-4. Uninstalling the ScreenManager Pro for LCD (DDC/CI)

- 1 Select “Control Panel” - “Uninstall a Program”**
- 2 Select “ScreenManager Pro for LCD (DDC/CI)” from the list and click “Uninstall”**


2. How to Start up/Exit out of the Setting Window

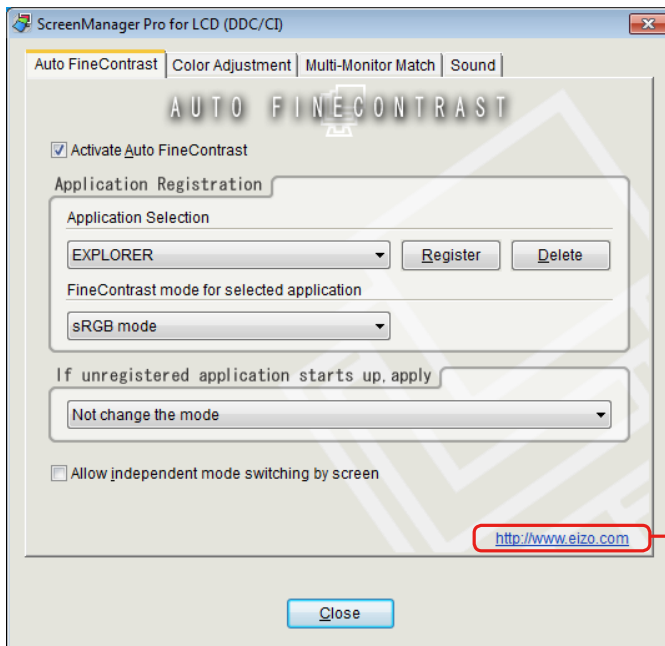
How to Start up

Right-click the ScreenManager Pro for LCD (DDC/CI) setting icon in the notification area and select “Setting of ScreenManager Pro for LCD (DDC/CI)”.

The ScreenManager Pro for LCD (DDC/CI) setting window appears.

Tips

- The setting window can also be shown by double clicking the ScreenManager Pro for LCD (DDC/CI) setting icon in the notification area.
- When the ScreenManager Pro for LCD (DDC/CI) setting icon is not resident in the notification area, start up the software by following procedure.
 - If your OS is Windows 8.1, click  on the “Start” screen and then click “ScreenManager Pro for LCD (DDC/CI)” on the “Apps” screen.
 - If your OS is Windows 8, click the tile displayed as “ScreenManager Pro for LCD (DDC/CI)” in the Start Screen.
 - If your OS is Windows 7, click “Start” - “All Programs” - “EIZO” - “ScreenManager Pro for LCD (DDCCI)” - “ScreenManager Pro for LCD (DDC/CI) Ver x.x.x”.



Click to visit our web site.

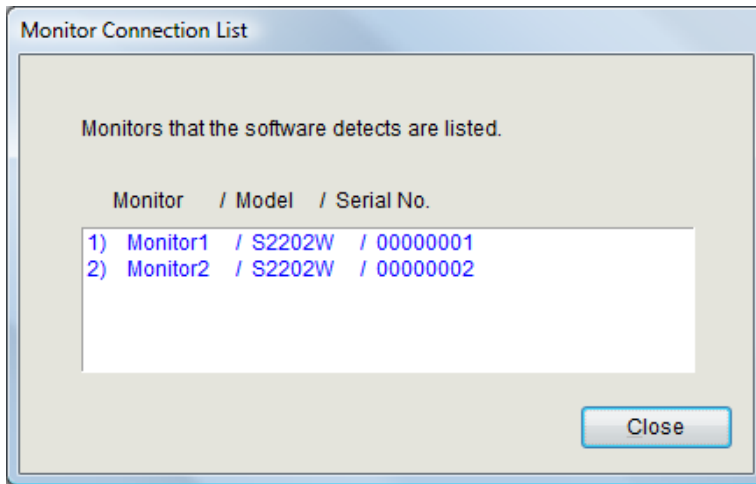
How to Exit out

Click “Close” on each setting window.

How to Display Monitor Connection List

Right-click the ScreenManager Pro for LCD (DDC/CI) setting icon in the notification area and select the “Monitor Connection List” from the list.

The list of the monitors that can be controlled with ScreenManager Pro for LCD (DDC/CI) appears.



About ScreenManager Pro for LCD (DDC/CI)

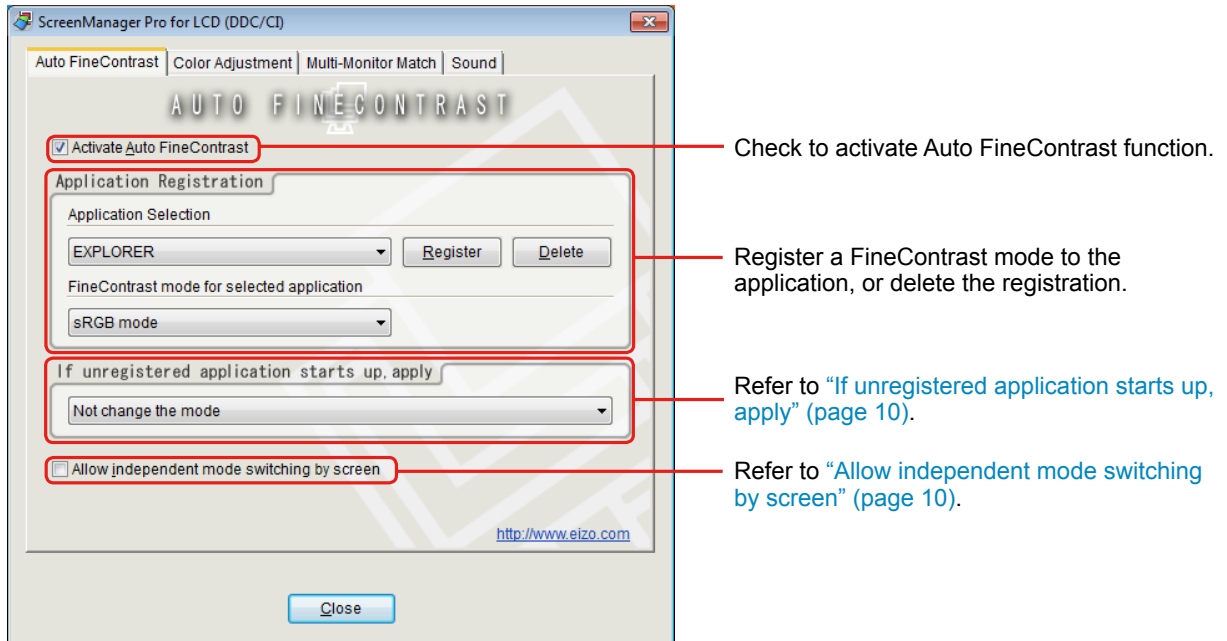
The software version can be checked by clicking “About” through the ScreenManager Pro for LCD (DDC/CI) icon on the far left of the title bar.

3. Auto FineContrast

By registering a FineContrast mode to each application, the monitor automatically switches its FineContrast mode for each application.

Tips

- For some models, the FineContrast mode is referred to as the Color mode.



Auto FineContrast Setting

To set the Auto FineContrast, assign a FineContrast mode to the application according to the following procedure.

- 1 Check “Activate Auto FineContrast”**
- 2 Select an application from “Application Selection” pull-down menu**

Tips

- Application names that have been active and that have been already registered as FineContrast modes are displayed in the pull-down menu.

3 Select a FineContrast mode to assign from “FineContrast mode for selected application” pull-down menu

Tips

- Each FineContrast mode availability depends on the models.
 - For details of the FineContrast modes, refer to the user’s manual of the monitor.
 - User color data which is registered in the “Color Adjustment” tab can be also selected as a mode of Auto FineContrast function.
-

4 Click “Register”

The FineContrast mode is assigned to the application, and the assignment is registered.

5 To register applications continuously, repeat step 2 through step 4

6 Click “Close”

Auto FineContrast setting is enabled.

When the registered application became active, the monitor mode is automatically switched to the FineContrast mode assigned to the selected application.

Note

- No FineContrast modes can be assigned for Windows desktop.
-

If unregistered application starts up, apply

Assign a FineContrast mode to the application to which any FineContrast modes are not registered in “Application Registration”. When the unregistered application became active, the monitor mode is automatically switched to the FineContrast mode assigned to the selected application. To assign a FineContrast mode to the application, select a FineContrast mode from the “If unregistered application starts up, apply” pull-down menu.

Allow independent mode switching by screen

This option is available when connecting two or more monitors with the system.

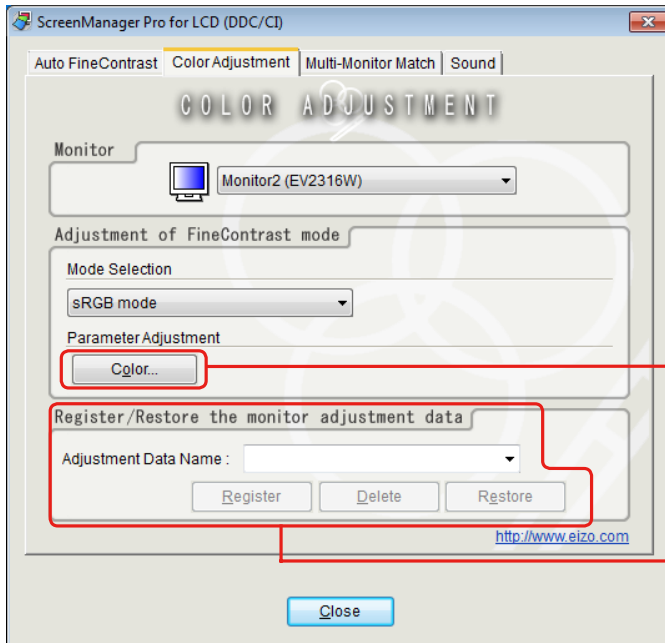
If this option is checked, the FineContrast mode changes for the monitor of application-activated. Other monitor screen(s) does not change the FineContrast mode. When the application window is shown over several screens, only the monitor will change its FineContrast mode that contains most of screen area of the application window.

4. Color Adjustment

Color settings of each FineContrast mode can be adjusted and registered independently. Customized adjustment data of the monitor can be stored in the PC and loaded at any time.

Tips

- For some models, the FineContrast mode is referred to as the Color mode.



Adjust the color basically
(Refer to “Color” (page 12)).

Register and read the color adjustment
status to reflect to the monitor.
Refer to “Register / Restore the monitor
adjustment data” (page 12).

- 1** From “Monitor” pull-down menu select the monitor to adjust when two or more monitors are connected to the system
- 2** Select the FineContrast mode for color adjustment from the “Mode Selection” pull-down menu

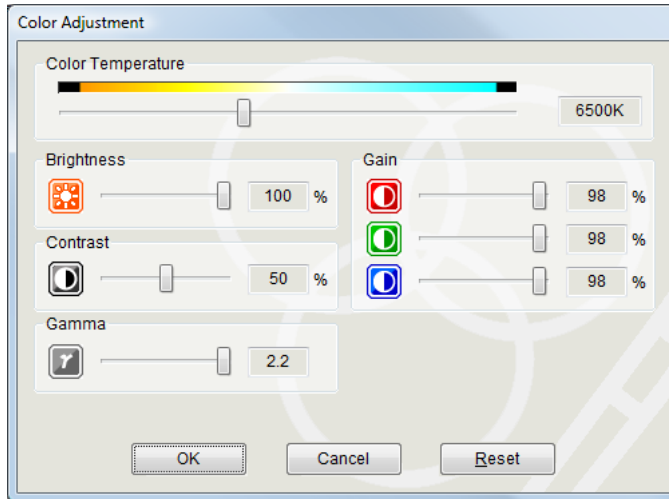
3 Adjust each parameter

Tips

- The adjustable items in “Parameter Adjustment” depend on the monitor. Refer to the user’s manual of the monitor to confirm that your monitor supports the items.

“Color”

The functions such as Color Temperature, Brightness, Contrast, Gamma and Gain are available.



Tips

- Clicking “Reset” returns only the currently used FineContrast mode to the default settings.
- The range for gamma adjustment differs according to the model.

4 Check “OK”

Color Adjustment setting is enabled.

Register / Restore the monitor adjustment data

The color adjustment data adjusted in “Color Adjustment” can be registered with any name. By reading the registered data, the adjusted values of each parameter can be reflected to the monitor all at once.

Register

Enter any name in “Adjustment Data Name” text box, and then click “Register”.

Delete

Select the color adjustment data name from “Adjustment Data Name” pull-down menu, and then click “Delete”. Selected color adjustment data is deleted.

Restore

Select the color adjustment data name from “Adjustment Data Name” pull-down menu, and then click “Restore”. Selected color adjustment data is reflected to the monitor.

5. Multi-Monitor Match

The Multi-Monitor Match function can be used with the FlexScan EV series of monitors. This function allows the results of color adjustment (color temperature, gamma, and brightness) configured for one monitor to be applied to other monitors. This saves the trouble of adjusting every monitor individually and can easily eliminate any difference in appearance between monitors.

Function Requirements

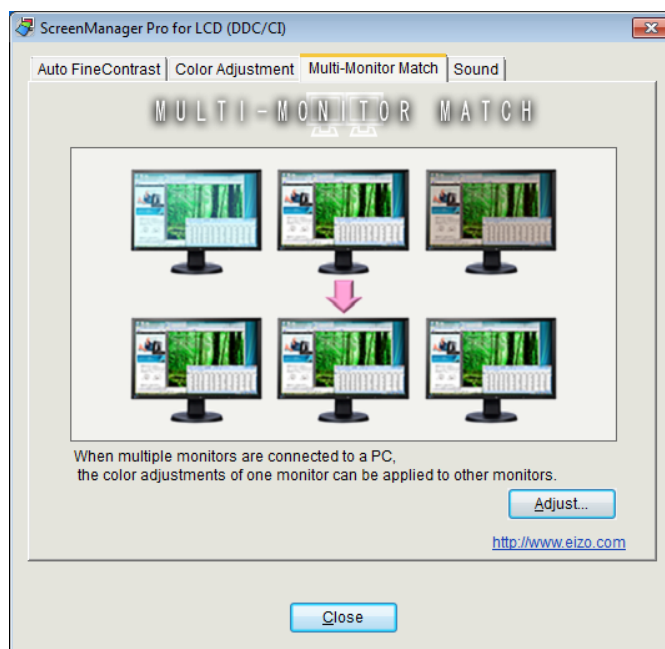
In order to use this function, multiple FlexScan EV series monitors must be connected to a single PC. The supported models are as follows:

EV2736W, EV2436W, EV2416W, EV2336W, EV2316W, EV2216W

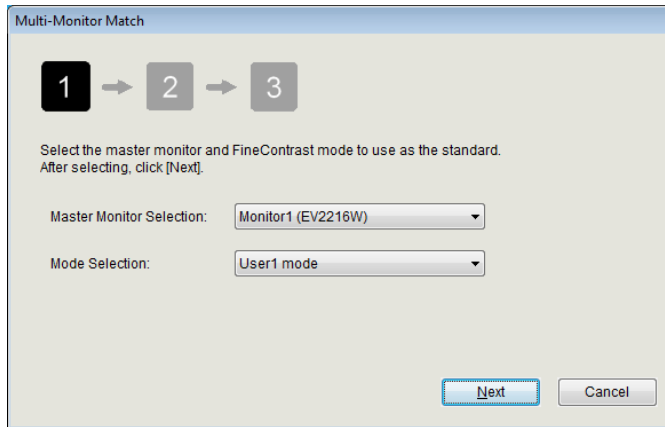
1 Check “Adjust...”

Tips

- If the “Function Requirements” (page 13) are not satisfied, the “Adjust...” button cannot be clicked.



2 Select the master monitor and FineContrast mode to use as the standard from the pull-down menus, and then click “Next”

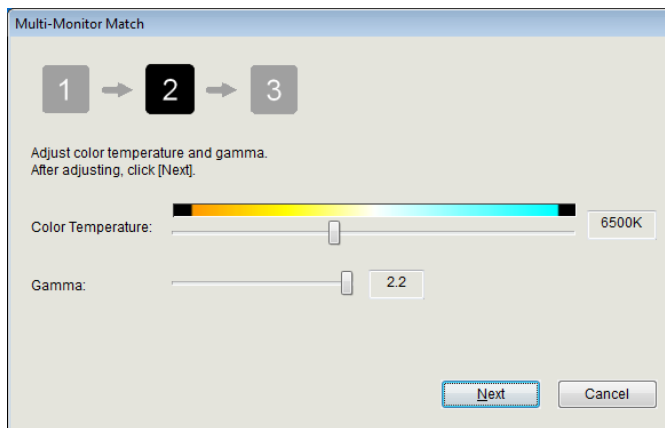


3 Adjust the color temperature and gamma, and then click “Next”

The adjustment results of the master monitor are applied to the other monitors.

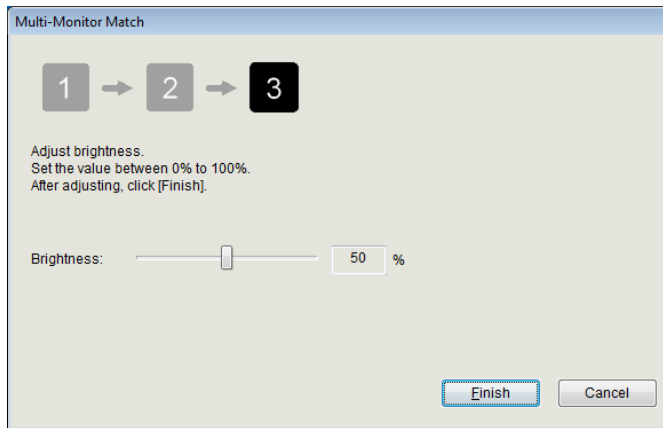
Tips

- The color temperature cannot be set to “Off”.
- Changes to the color temperature and gamma may not be possible depending on the selected FineContrast mode. For details on items that can be changed in each mode, refer to the User’s Manual of the monitor.



4 Adjust the brightness and click “Finish”

The adjustment results of the master monitor are applied to the other monitors.

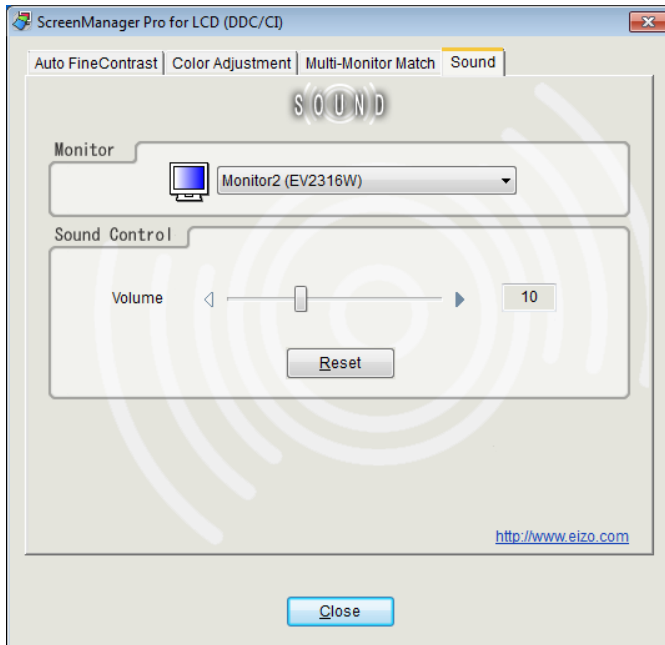


Tips

- If the maximum luminance value differs between each connected monitor, the maximum luminance is adjusted based on the model with the lowest value. For this reason, the brightness that can be adjusted in this window may be less than 100%.
- Executing this function performs adjustment so that the actual luminance (luminance value) is the same between monitors. For this reason, the “Brightness” value displayed on the Setting menu of the monitor may differ between monitors.
- To perform further fine tuning of each monitor after completing adjustment with Multi-Monitor Match, change the “Brightness” and “Gain” values in the Setting menu.

6. Sound

Volume can be controlled for the built-in speaker supported monitor.



- 1** When two or more monitors are connected to the system, select the monitor to set from “Monitor” pull-down menu
- 2** Adjust the volume by moving the slide bar

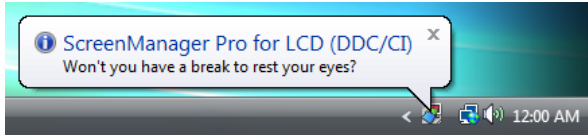
Tips

- Click “Reset” to change the volume back to the default.
- The range for volume adjustment differs according to the model.

7. EyeCare

You can care the health of your eyes.

- EyeCare Reminder
Any pop up messages can be shown periodically.

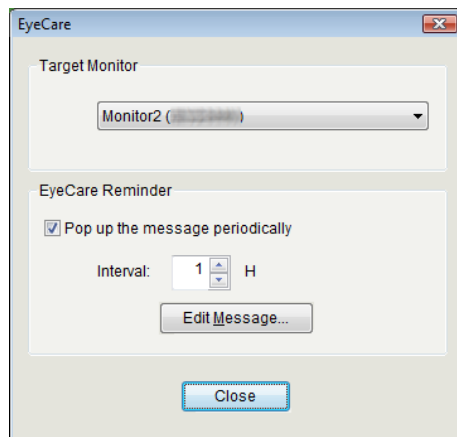


Note

- The EyeCare (EyeCare Reminder) requires the ScreenManager Pro for LCD (DDC/CI) setting icon is resident in the notification area.

1 Right-click the ScreenManager Pro for LCD (DDC/CI) setting icon in the notification area, and select “EyeCare Setting” from the list

EyeCare setting window appears.



2 When two or more monitors are connected to the system, select the monitor to set from “Target Monitor” pull-down menu

3 Check “Pop up the message periodically”

4 Set the display interval of the message

The message can be set up to 24 hours by the hour.

5 Click “Edit Message” to edit the message

The message editing window appears. The message can be edited within 255 characters.

Note

- If the target monitor is changed, elapsed time until the message appears is reset.

8. EyeCare Filter

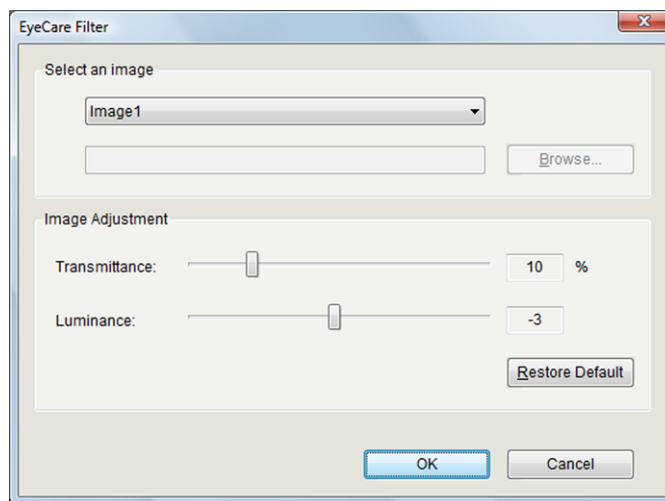
Texture of the paper is reproduced by displaying a translucent image in the foreground of the desktop. The screen looks more like paper by using this function with the Paper mode that is supplied with some models.

Note

- The EyeCare Filter requires the ScreenManager Pro for LCD (DDC/CI) setting icon is resident in the notification area.

1 Right-click the ScreenManager Pro for LCD (DDC/CI) setting icon in the notification area, and select “EyeCare Filter Setting” from the list

EyeCare Filter setting window appears.



2 Select an image from “Select an image” pull-down menu

The selected image appears.

Setting	Details
Image1 to 6	Six types of images have been prepared in advance. Select an image according to preference.
Select File	Any image* can be selected. Click “Browse” to select an image file.

* The following image file formats can be selected.

bitmap (*.bmp), JPEG (*.JPG, *.JPEG, *.JPE, *.JFIF), GIF (*.GIF), TIFF (*.TIF, *.TIFF), PNG (*.PNG)

Tips

- The filter can be hidden by selecting “None”.

3 Adjust the transmittance and luminance of the image by moving the slide bar

(Transmittance: 0 to 50%, Luminance: -100 to 100)

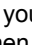

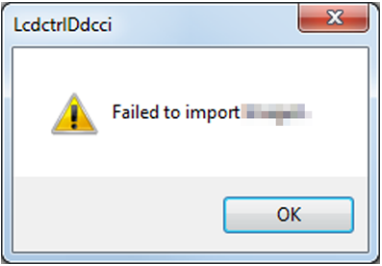
4 Check “OK”

EyeCare Filter setting is enabled.

Tips

- Click “Restore Default” to restore the transmittance and luminance of the currently selected image to the default settings.
-

9. Troubleshooting

Problems	Possible cause and remedy
1. "ScreenManager Pro for LCD (DDC/CI)" does not run.	<ul style="list-style-type: none"> A graphics board that supports DDC/CI communication is required. For compatibility of graphics board, see our web site (http://www.eizo.com).
2. The icon is not shown in the notification area.	<ul style="list-style-type: none"> If your OS is Windows 8.1, click  on the "Start" screen and then click "ScreenManager Pro for LCD (DDC/CI)" on the "Apps" screen. If your OS is Windows 8, click the tile displayed as "ScreenManager Pro for LCD (DDC/CI)" in the Start Screen. If your OS is Windows 7, click "Start" - "All Programs" - "EIZO" - "ScreenManager Pro for LCD (DDCCI)" - "ScreenManager Pro for LCD (DDCCI) Ver x.x.x" to start up the software. ScreenManager Pro for LCD (DDC/CI) cannot be used simultaneously with other software that also uses DDC/CI communication. ScreenManager Pro for LCD (DDC/CI) may be uninstalled when other such software is installed.
3. The icon is in monochrome. 	<ul style="list-style-type: none"> Check whether the monitor that is described in "1-1. System Requirements" (page 4) is connected. Reboot the PC if the icon is in monochrome even though the monitor that is described in "1-1. System Requirements" (page 4) is connected.
4. Auto FineContrast is disabled.	<ul style="list-style-type: none"> The Auto FineContrast function requires the ScreenManager Pro for LCD (DDC/CI) setting icon is resident in the notification area. Confirm "Activate Auto FineContrast" option in the "Auto FineContrast" tab is checked. Close the setting window. (Closing the setting window enables the function.)
5. The message below appears. 	<ul style="list-style-type: none"> The selected image file may be corrupt. Check whether or not the image file is corrupt. Check whether the format of the selected image file is a selectable file format (refer to "8. EyeCare Filter" (page 18)).
6. The active monitor is not shown in the "Monitor Connection List".	<ul style="list-style-type: none"> Check whether the monitor that is described in "1-1. System Requirements" (page 4) is connected. Reboot the PC if the icon is in monochrome even though the monitor that is described in "1-1. System Requirements" (page 4) is connected.
7. The "Adjust..." button on the "Multi-Monitor Match" tab cannot be clicked.	<ul style="list-style-type: none"> In order to use the Multi-Monitor Match function, multiple FlexScan EV series monitors must be connected to a single PC (refer to "Function Requirements" (page 13)).



EIZO Corporation

<http://www.eizo.com>

Copyright © 2008-2014 EIZO Corporation All rights reserved.

14th Edition-August, 2014

03V22458P1
(U.M-SMPROLCD-DDCCI)